

Application:

Quick acting valves made of brass according to DIN 4817-1 and DIN EN 12514-2 with couplings for a quick isolation of the fuel supply.

Models:	Item no.:
Pipe connection	
6 x 6 mm	2100051
8 x 8 mm	2100052
10 x 10 mm	2100053
12 x 12 mm	2100054
15 x 15 mm	2100055

Technical data:

Size:	Ø 6, 8, 10, 12 and 15 mm
Operating pressure:	PN 16
Ambient temperature:	-25 °C up to +70 °C, for heating oil 0 °C up to 40 °C recommended, see DIN 4755
Body:	Brass, unplated
Connections:	Couplings according to DIN 2353 with collar nuts made of galvanised steel and brass cutting rings
Fluids:	Liquid gases according to DIN 51622 in gaseous or liquid state, light heating oil on mineral oil basis, e.g. EL type of heating oil according to DIN 51503-1 as well as heating oil with a bio proportion up to 5 %, compressed air
Direction of flow:	See arrow on handle
Approval:	DVGW-G approved

Installation:

The quick acting isolating valve is installed in the pipework (copper according to EN 1057) via the couplings. Suitable reinforcing sleeves are to be used.

The approved rules of technology (e.g. DIN 4755) have to be observed.

Operation and maintenance:

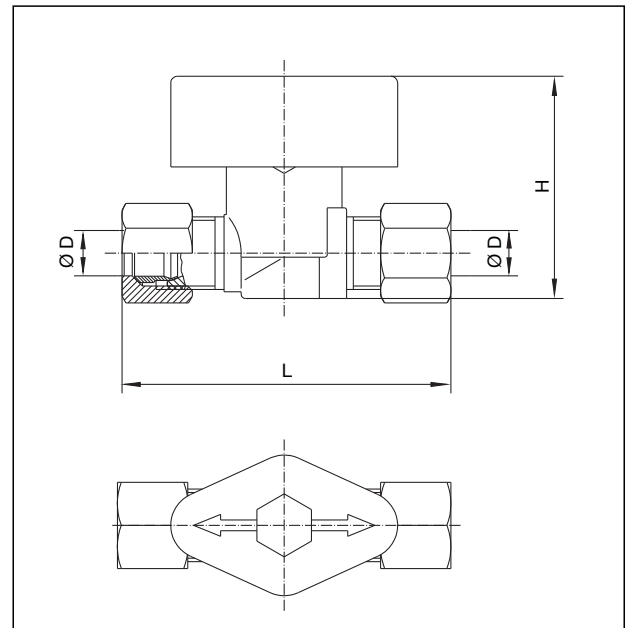
The valve is isolated and opened by turning the handle by 90° in any direction. The position of the valve is displayed by the handle. The valve is maintenance-free.

Accessories:

Brass reinforcing sleeve for copper pipe with a wall thickness of 1 mm	
Outer pipe diameter/Item no.:	
6 mm	2083951
8 mm	2083952
10 mm	1029651
12 mm	1029652
15 mm	1029654

OVENTROP GmbH & Co. KG
Paul-Oventrop-Straße 1
D-59939 Olsberg, Germany
Phone +49 (0)29 62 82-0
Fax +49 (0)29 62 82-450
E-Mail mail@oventrop.de
Internet www.oventrop.de

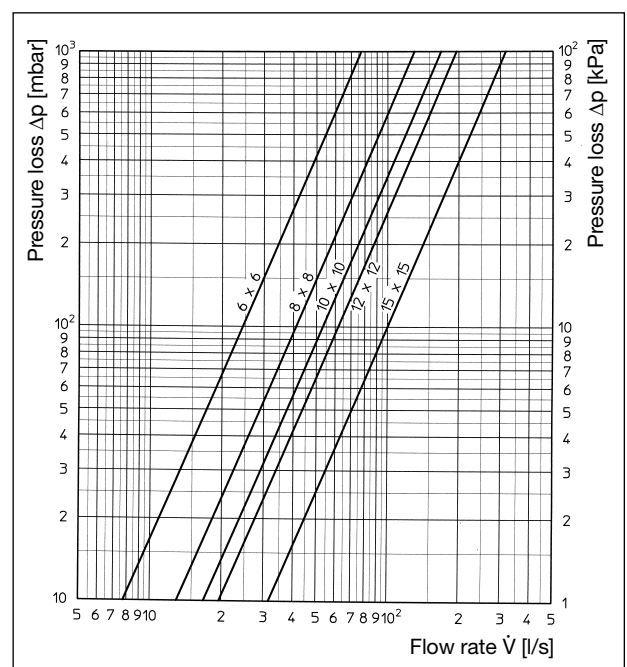
For an overview of our global presence visit www.oventrop.de.



Quick acting isolating valve

Item no.	D x D	L ~	H ~
2100051	6 x 6	66	46
2100052	8 x 8	69	46
2100053	10 x 10	72	49
2100054	12 x 12	73	49
2100055	15 x 15	85	60

Dimensions [mm]



Flow chart

Subject to technical modification without notice.

Product range 9
ti 221-EN/10/MW
Edition 2015